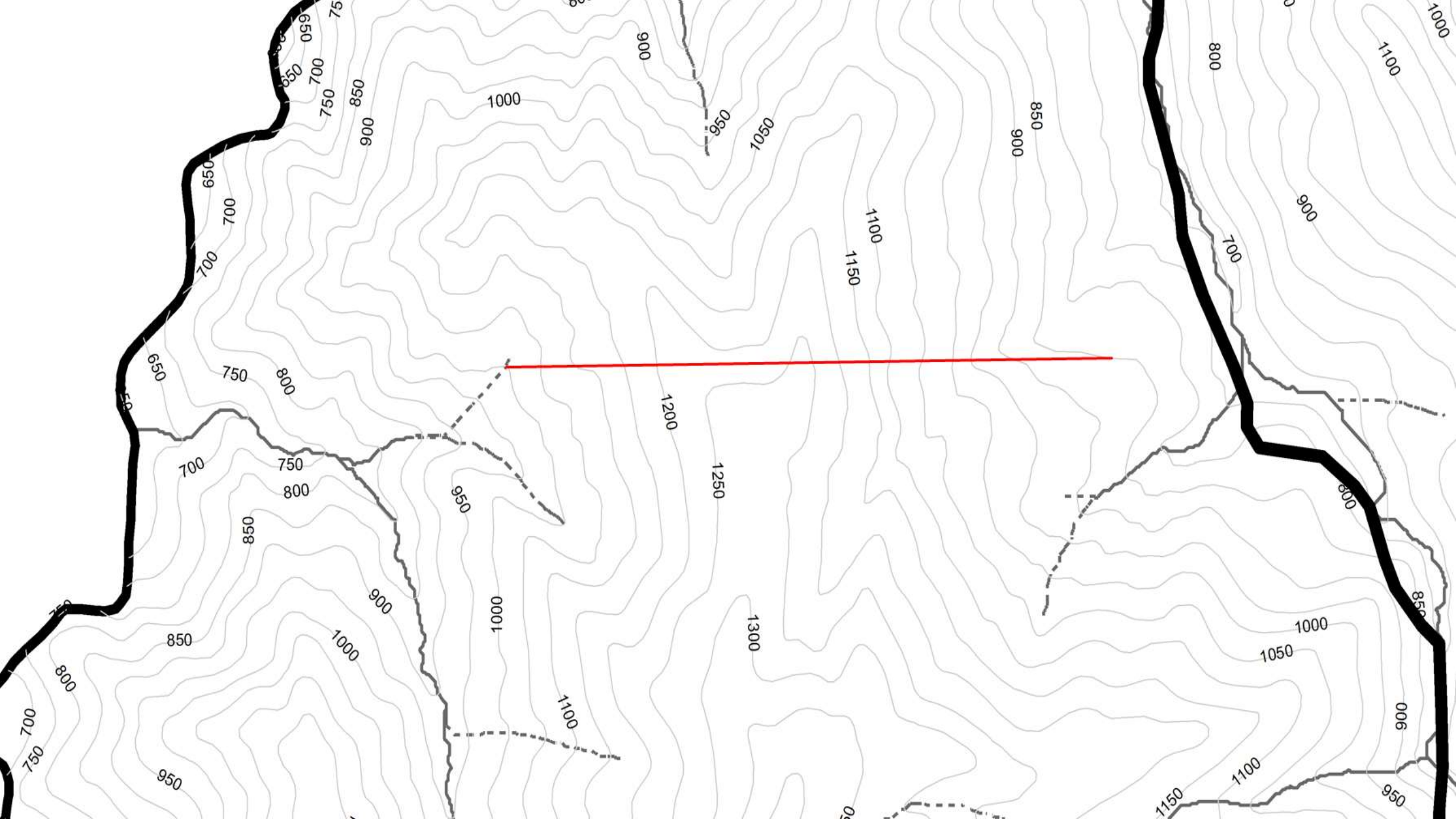


TRANSPORT TEKNIĐI VE TESİSLERİ DERSİ UYGULAMASI

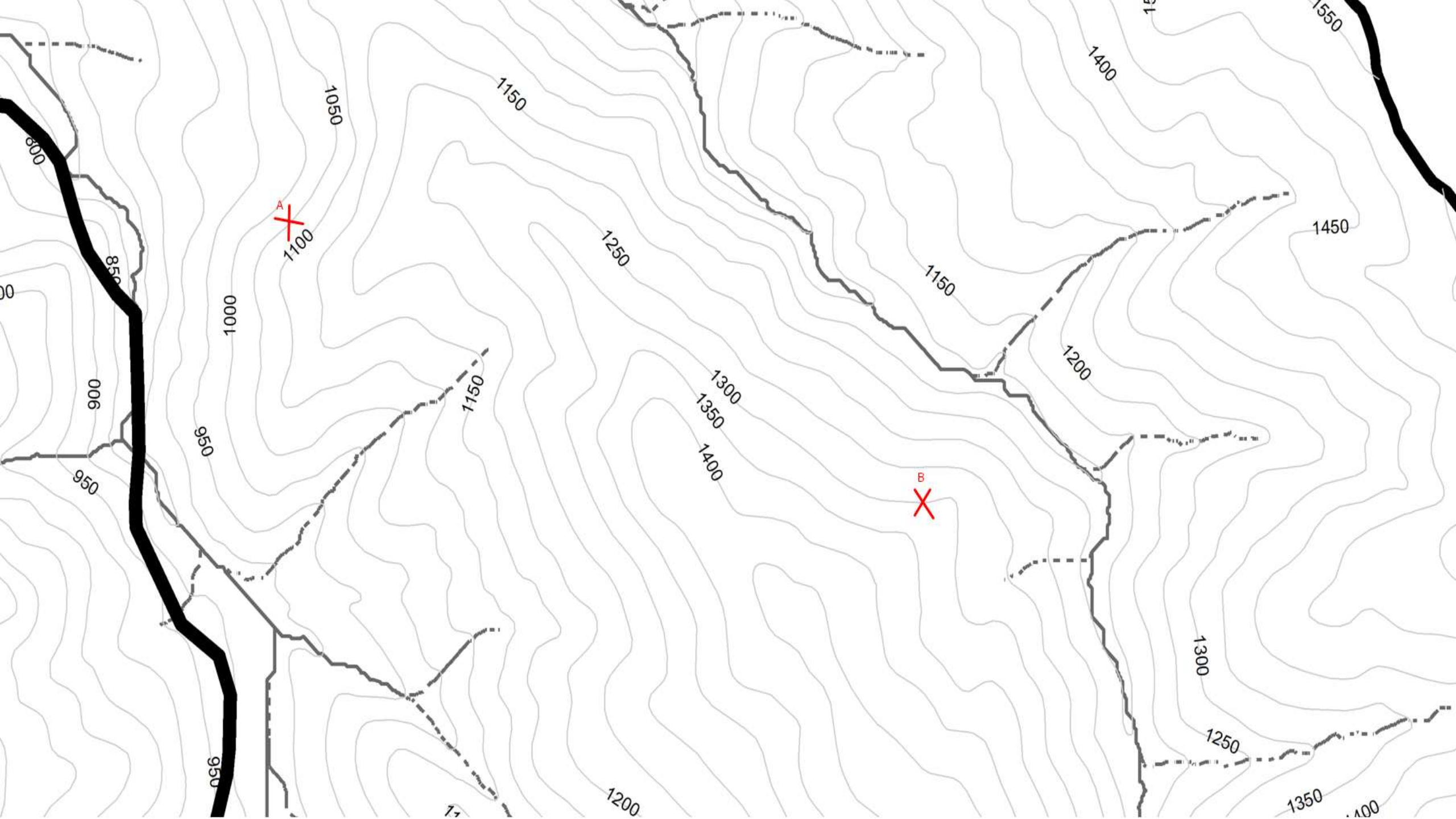


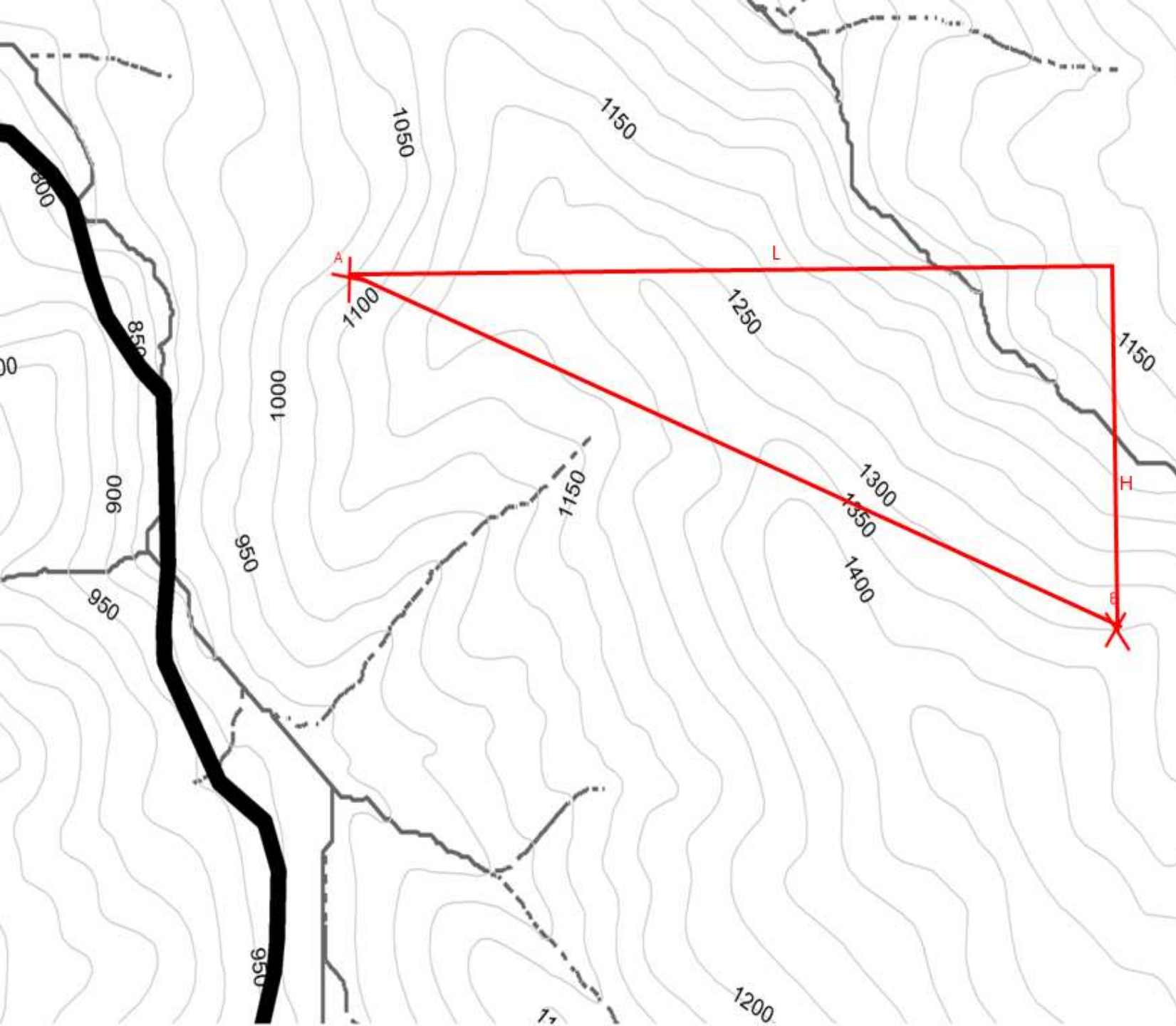
BOYUNA PROFİL ÇİZİMİ





EĐİM VE PERGEL AÇIKLIĐI HESAPLAMA





- $\%Eğim = \frac{H}{L} * 100$

- $\frac{1300-1050}{2125} * 100 = \% 11.76$

- $Pergel\ Açıklığı = \frac{h}{P} * 100$

- $\frac{50}{11.76} * 100 = 425.17\ m$ Ölçek ile çarpılırsa;

- $425.17 * \frac{1}{25000} = 0.017m \rightarrow x = 1.7\ cm$

- $\%Eğim = \frac{H}{L} * 100$

- $\frac{1300-1050}{2125} * 100 = \% 11.76$

- $Pergel\ Açıklığı = \frac{h}{P} * 100$

- $\frac{50}{11.76} * 100 = 425.17\ m$ Ölçek ile çarpılırsa;

- $425.17 * \frac{1}{25000} = 0.017\ m \longrightarrow x = 1.7\ cm$